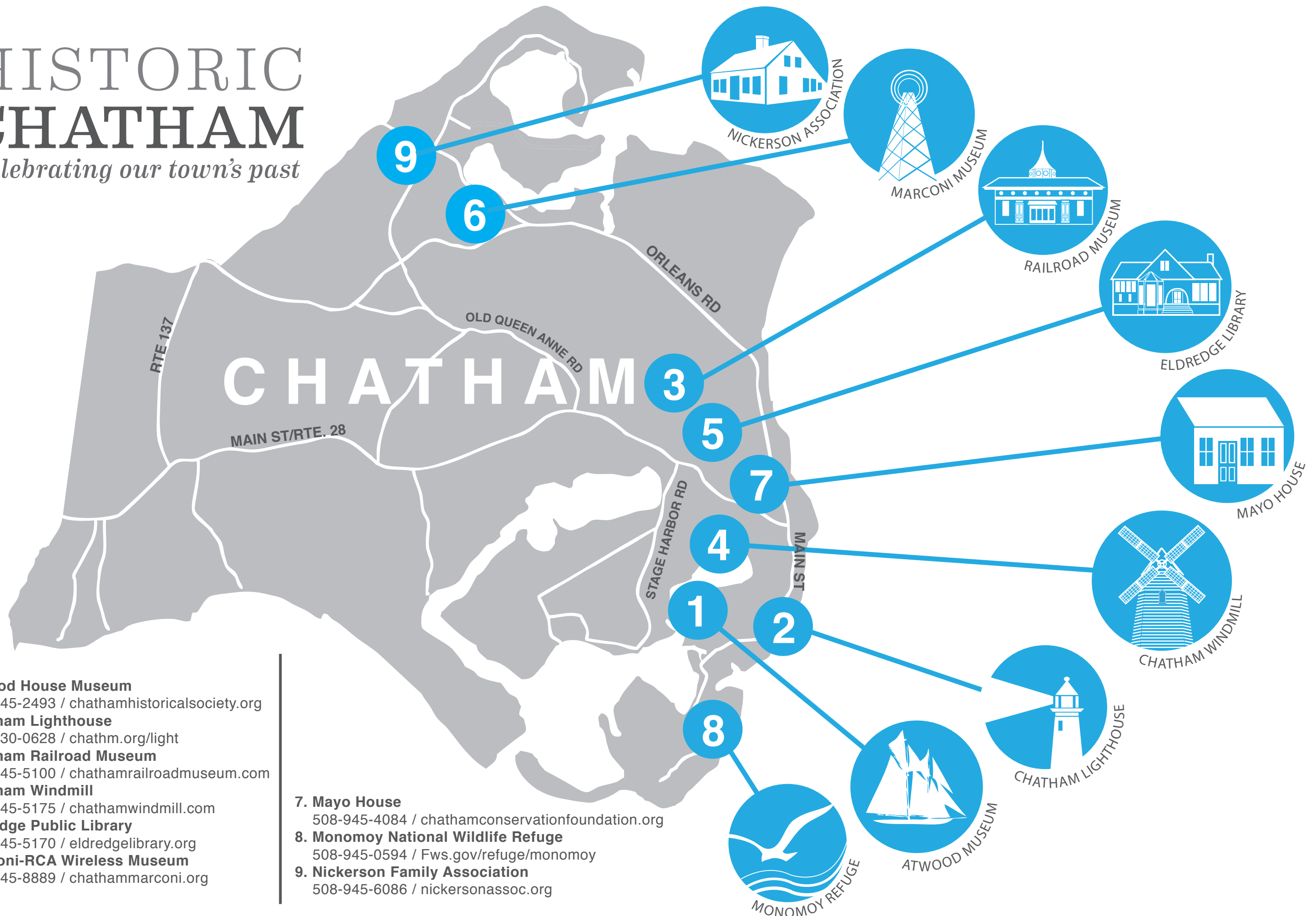


# HISTORIC CHATHAM

*Celebrating our town's past*



- 1. **Atwood House Museum**  
508-945-2493 / [chathamhistoricalsociety.org](http://chathamhistoricalsociety.org)
- 2. **Chatham Lighthouse**  
508-430-0628 / [chathm.org/light](http://chathm.org/light)
- 3. **Chatham Railroad Museum**  
508-945-5100 / [chathamrailroadmuseum.com](http://chathamrailroadmuseum.com)
- 4. **Chatham Windmill**  
508-945-5175 / [chathamwindmill.com](http://chathamwindmill.com)
- 5. **Eldredge Public Library**  
508-945-5170 / [eldredgelibrary.org](http://eldredgelibrary.org)
- 6. **Marconi-RCA Wireless Museum**  
508-945-8889 / [chathammarconi.org](http://chathammarconi.org)

- 7. **Mayo House**  
508-945-4084 / [chathamconservationfoundation.org](http://chathamconservationfoundation.org)
- 8. **Monomoy National Wildlife Refuge**  
508-945-0594 / [Fws.gov/refuge/monomoy](http://Fws.gov/refuge/monomoy)
- 9. **Nickerson Family Association**  
508-945-6086 / [nickersonassoc.org](http://nickersonassoc.org)